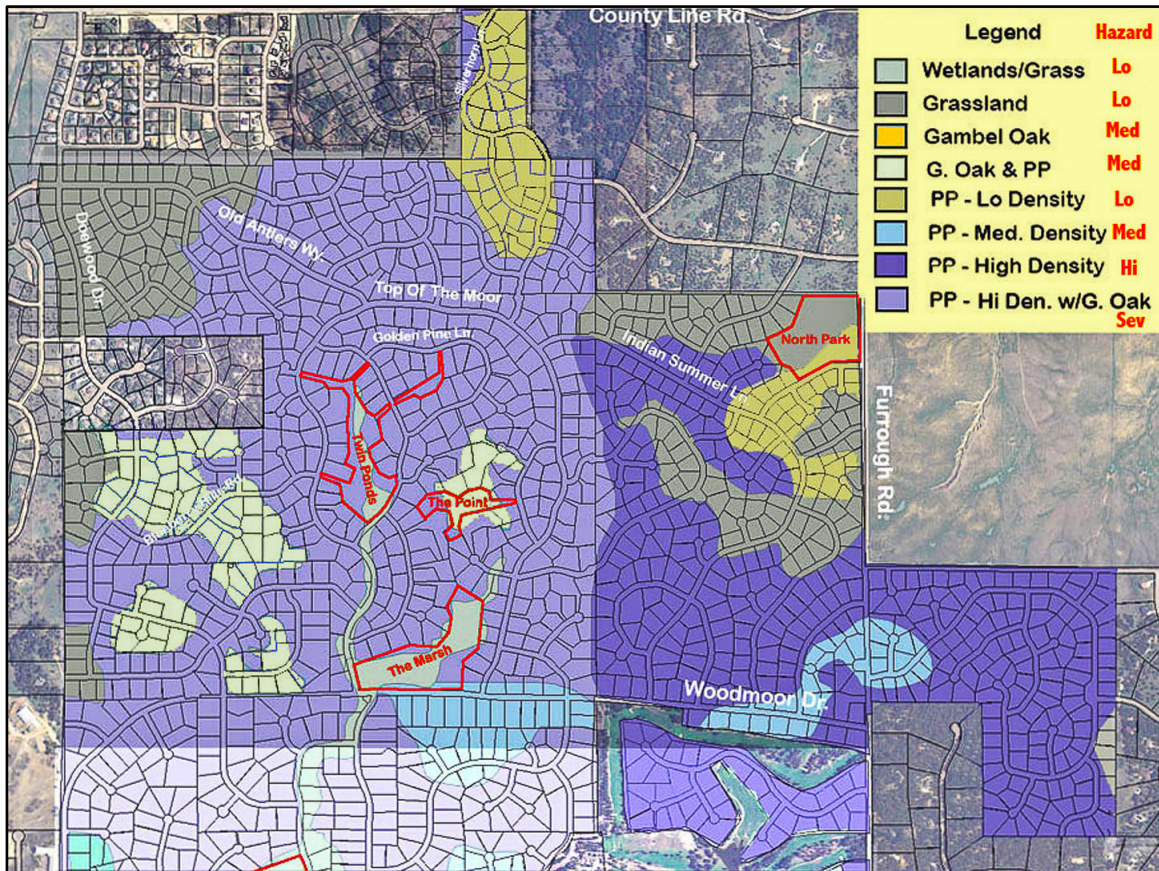
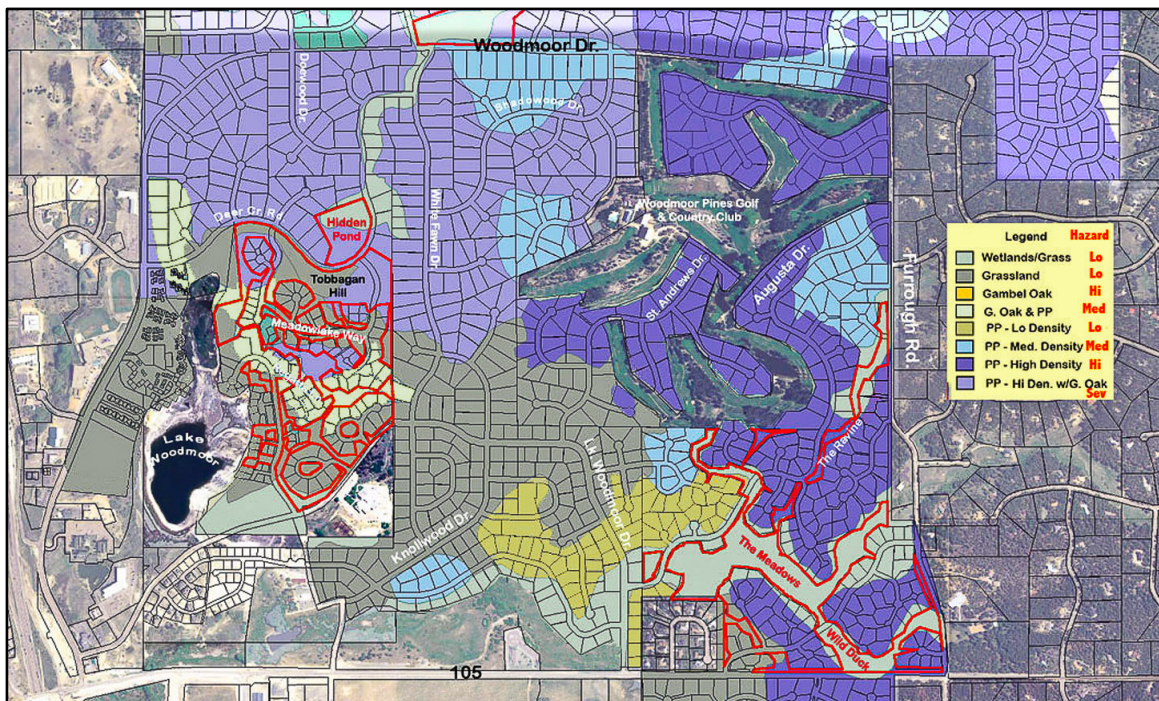


WHAT IS THE WILDFIRE HAZARD RATING OF YOUR LOT?

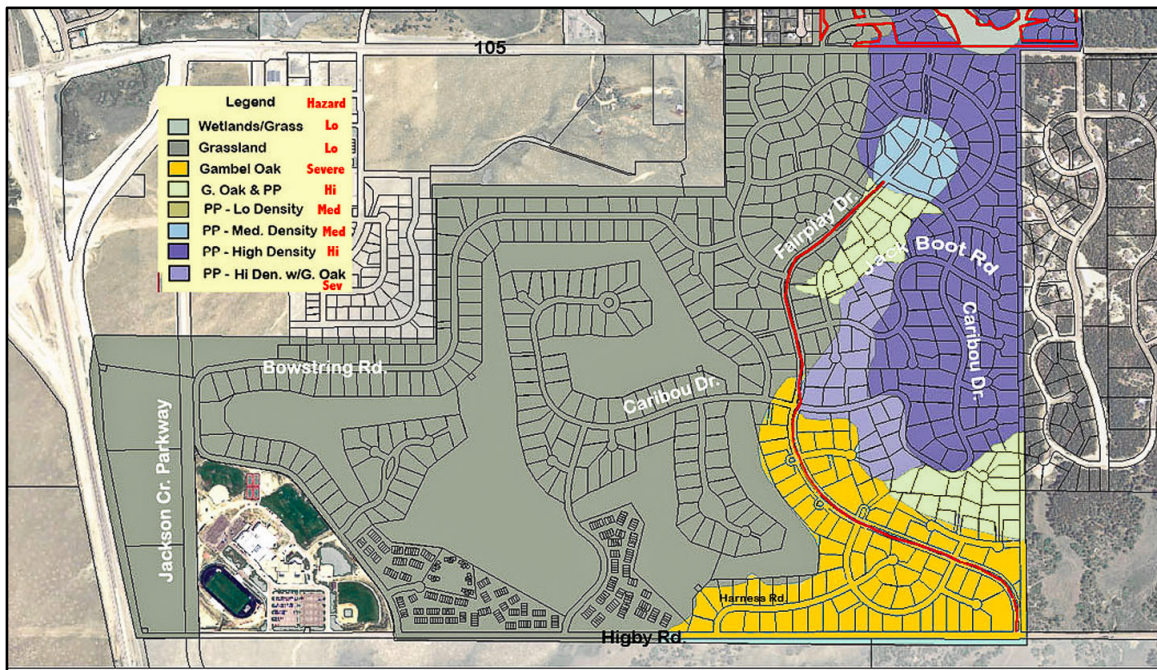
If you locate your property on one of these three vegetation type maps you will find your wildfire hazard rating. Hazard ratings are tied to the vegetation types. See the legends for explanation.



North Woodmoor



Central Woodmoor



South Woodmoor

Meaning of Wildfire Hazards

These maps came from Woodmoor’s 2006 Community Wildfire Protection Plan (CWPP). A committee of representatives from the fire department, state forest service, El Paso County, and Woodmoor evaluated these vegetation types and assigned the hazard ratings. Major consideration was given to: 1) risk of ignition from lightning, 2) estimated probability that a surface fire could become a crown fire, and 3) the probability that a potential crown fire would ignite more than one home. The definitions were:

Low Hazard – risk of home ignitions from burning vegetation is low. Homes downwind of a grass or forest fire are vulnerable to burning embers.

Medium Hazard – risk of home ignitions from burning vegetation is moderate. Homes downwind of a grass or forest fire are vulnerable to burning embers.

High Hazard – high probability of home ignitions from a wildfire burning in the tops (crowns) of dense pine and flammable shrubs such as scrub oak.

Severe Hazard – very high probability of multiple home ignitions from a wildfire burning in adjacent flammable shrubs and in the tops of dense pine.

Note: The accuracy of the vegetation maps was +/- 1.5 acres. Single lots with very different vegetation than their neighbors could not be delineated and their rating is the same as their neighbors. These maps do not show any fuels reduction work done after 2005.

Recommended Reading

Woodmoor Forestry Information Bulletin “**Protecting Your Home From Wildfires With Defensible Space**” describes wildfire behavior and the main factors that control it.

Help In Assessing and Managing Your Vegetative Fuels

Woodmoor has trained forestry volunteers who can evaluate your wildfire hazard and help you prioritize reduction work on your lot. This service is free. Call the WIA office at 719-481-2693 and request a Fire-wise Home and Lot Evaluation.